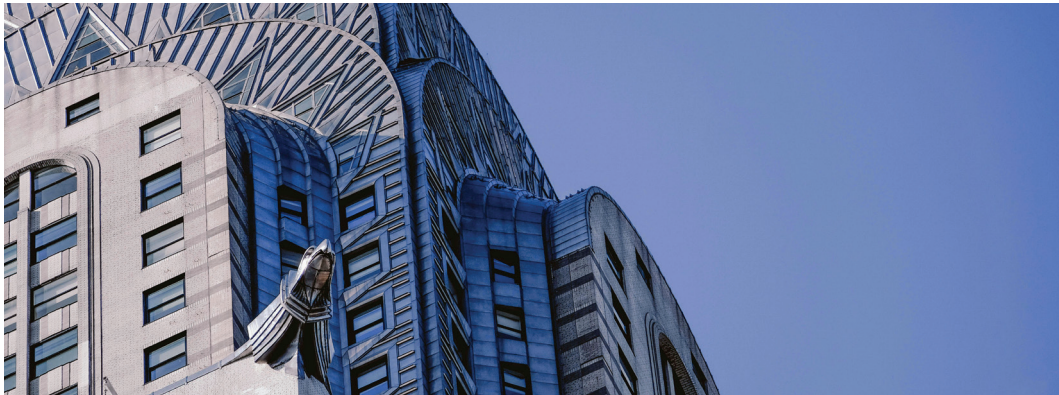


NEWSLETTER

JANUARY 2024 ONGOING

IUSLAKE ADVISES FAMILY-RUN INVESTOR GROUP IN SIGNA INSOLVENCY



The insolvency of the Signa Group has since led to the insolvency of numerous German real estate investment companies in various German capitals.

Iuslake is advising a family-run investor group that has invested in real estate of various Signa property companies in Hamburg and Munich with a total investment volume in the three-digit million range.

Iuslake came into the mandate through the recommendation of another Family Office.

Please contact Dr. Andreas Hautkappe if you have any questions. For further information, please visit www.iuslake.de.